

Cirque Du Soleil's Hawaiian Debut



Cirque du Soleil's new Hawaiian inspired production 'Auana has made its debut at Outrigger Waikiki Beachcomber Hotel, and the reviews are in.

The show shares Hawai'i's heritage and stories through acrobatics and multimedia projections. Cultural creative producer Dr Aaron J Sala says it offers Hawaiians a chance to 'stand in their culture', while visitors will get an insight into the people of

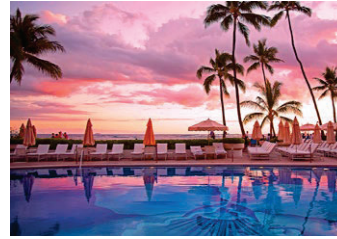
Hawai'i. "If we find opportunities to tell our stories using platforms like Cirque du Soleil that catapult our work to the mainstream, I feel very simply but very firmly that Hawai'i can change the world."

As to the reviews, Dwayne 'The Rock' Johnston was among those at the premiere, and he sung its praises. "I thought the show was brilliant, the performers were amazing, but what I really loved is that our Polynesian culture is at the forefront of something that pierces cultures like Cirque du Soleil," says Johnson. "I think it's rare when you have something that can span from beautiful storytelling, culture, song, comedy, humour—I loved it."

... Details

Performances run Wed-Sun at 1730 and 2030, exclusively at the Outrigger Theater, located at the Outrigger Beachcomber, with tickets starting at USD85 including taxes and fees. For clients who want to go all out, an 'Auana VIP Experience can be added on, which includes access to a 90-minute reception at Maui Brewing Company Waikiki, where clients will find canapes, cocktails and have the chance to meet with 'Auana cast members. Prices start at USD149. See more [HERE](#).

Halekulani Agent Deals

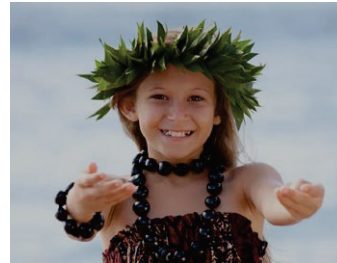


Waikiki's iconic Halekulani hotel and sister property Halepuna have released agent rates, noting that it is because of agents that guests stay at the hotels, and return year after year. See more details [HERE](#).

Lydgate Clean Up

For Kaua'i-bound clients, Friends of Kamalani and Lydgate Beach Park host a clean up of Lydgate Beach Park every Sat 0830. Visitors can join in by meeting at the lifeguard tower at the aforementioned time, with the clean-up lasting around two hours.

Waimea Celebration



Kaua'i's largest community festival, the 48th annual *Waimea Town Celebration*, is taking place 15-23 Feb.

Celebrating the island's cultural heritage, clients on the island during the time will find family-friendly events, including a two-day block party with local musicians and entertainment, arts and crafts, local cuisine and a beer garden.

Fun runs, a rodeo, canoe races, a film festival, food-eating contests, storytelling sessions and more are on the menu. Check it out [HERE](#).

Outrigger Kids Club



A new *Coral Kids Club* has opened at Outrigger Reef Waikiki Beach Resort, catering to families with children aged between five and 12 years old.

The club offers daily cultural workshops such as lei making and hula lessons, as well as hands-on activities around ocean conservation, as part of the Outrigger Zone initiative. Located in the resort's new *Waiola Wellness Wing*, the *Coral Kids Club* is open daily 0900-1600, with parents able to make half or full day reservations. See more [HERE](#).

Kaumana Re-Opens

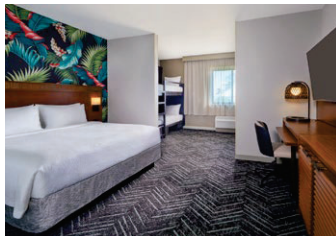
Kaumana Lava Caves on the Island of Hawai'i has reopened, after a rock fall. More information on the Hilo landmark, as well as other attractions on the island can be found [HERE](#).

Ala Moana Hula



Ala Moana Hotel by Mantra is now offering weekly live music and hula performances in its lobby every Fri from 1500. The experience is hosted in partnership with 'Akahi Productions, a local entertainment group known for its diverse performances, including live music, hula shows, and fire knife dancing. The new series runs through to the end of the year; see details [HERE](#).

Marriott's New Look



The Courtyard Marriott O'ahu North Shore has a new look, after the the 144-room resort completed a property-wide transformation. Highlights include revamped lobby spaces, upgraded recreational facilities, and refreshed guest rooms, as well as the addition of four new family rooms, which offer a king bed and two sets of twin bunk beds. Kitchenettes have also been added to all suites. See more, [HERE](#).

Add some Aloha to your USA vacation

FLY FROM AUCKLAND TO HONOLULU AND CONNECT TO 16 CONTINENTAL U.S. DESTINATIONS.

LEARN MORE AT HAWAIIANAIRLINES.CO.NZ.

